



Free webinar

# Innovations to address senior nutrition



"Miss Oklahoma" Megan Gold shares her state's inspiring solutions that feed seniors in need

Wednesday, Sept. 21 at 2 p.m. ET / 11 a.m. PT



Register

# CareForum 2022

The WellSky® Conference

## Data Sharing & Person-Centered Care: Medicaid & Adult Protective Services

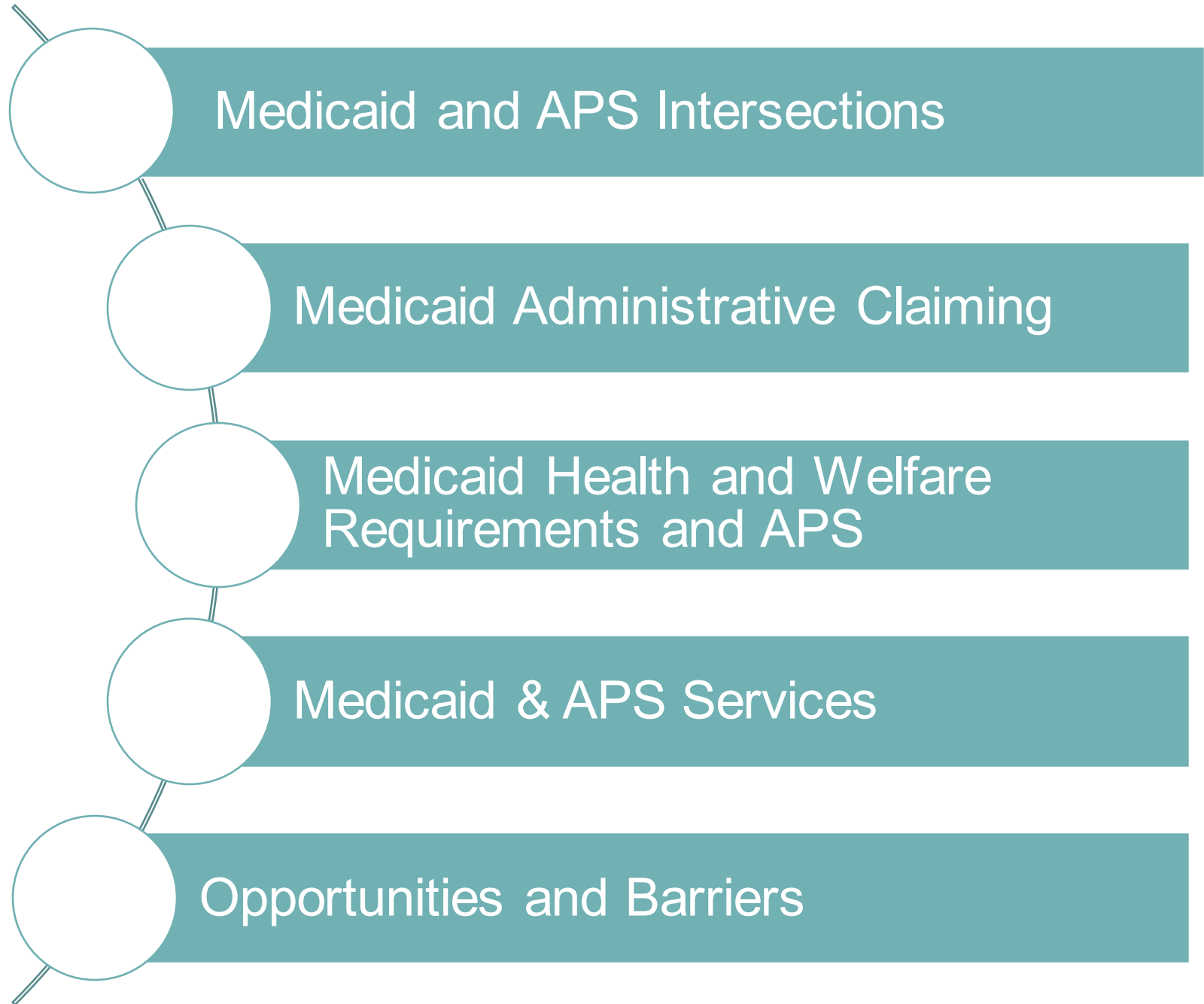
Kathy Greenlee, J.D.

Senior Director of Elder Justice Initiatives at ADvancing States

September 13, 2022



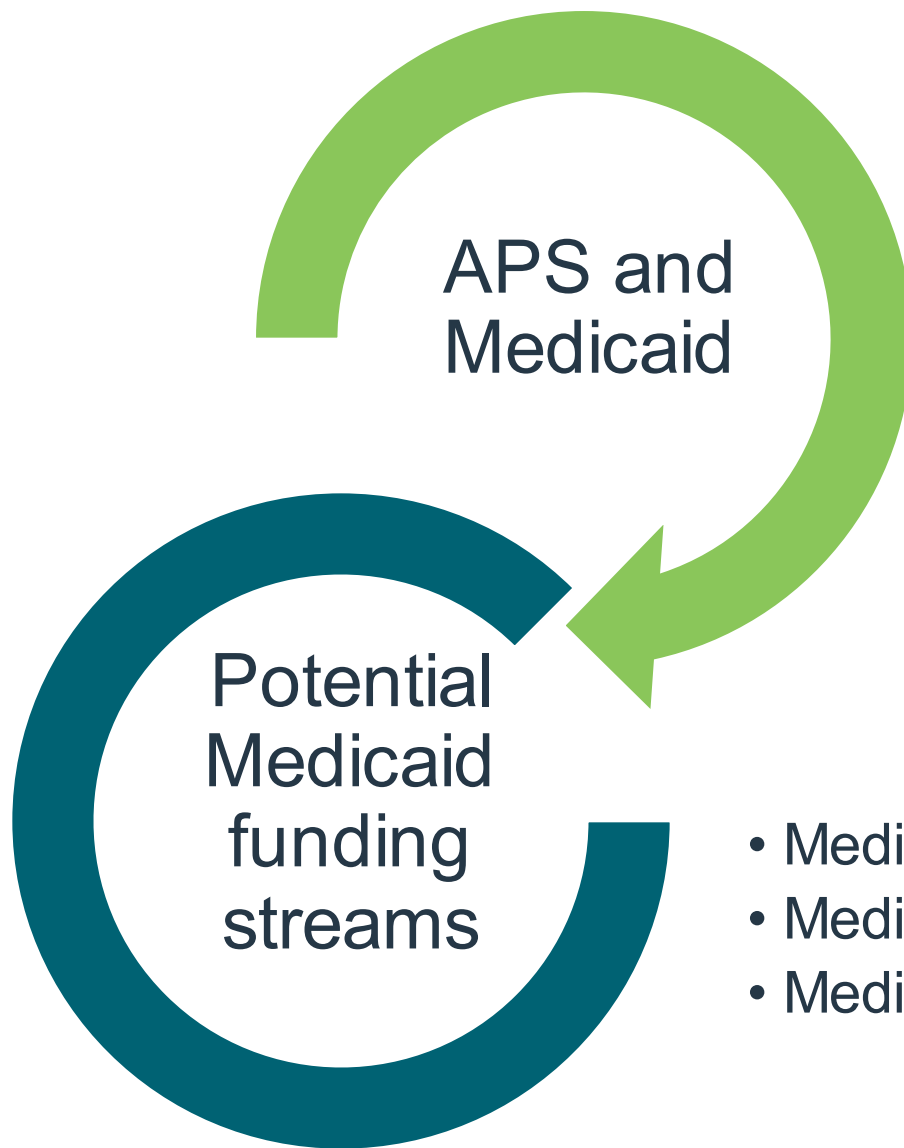
# Agenda



# National Adult Maltreatment Reporting System (NAMRS)

2019 Allegation Type	2020 Allegation Type
51.0% self-neglect	49.2% self-neglect
24.0% neglect	24.6% neglect
23.8% exploitation	24.6% exploitation
12.6% physical abuse	13.1% physical abuse
1.6% sexual abuse	1.5% sexual abuse

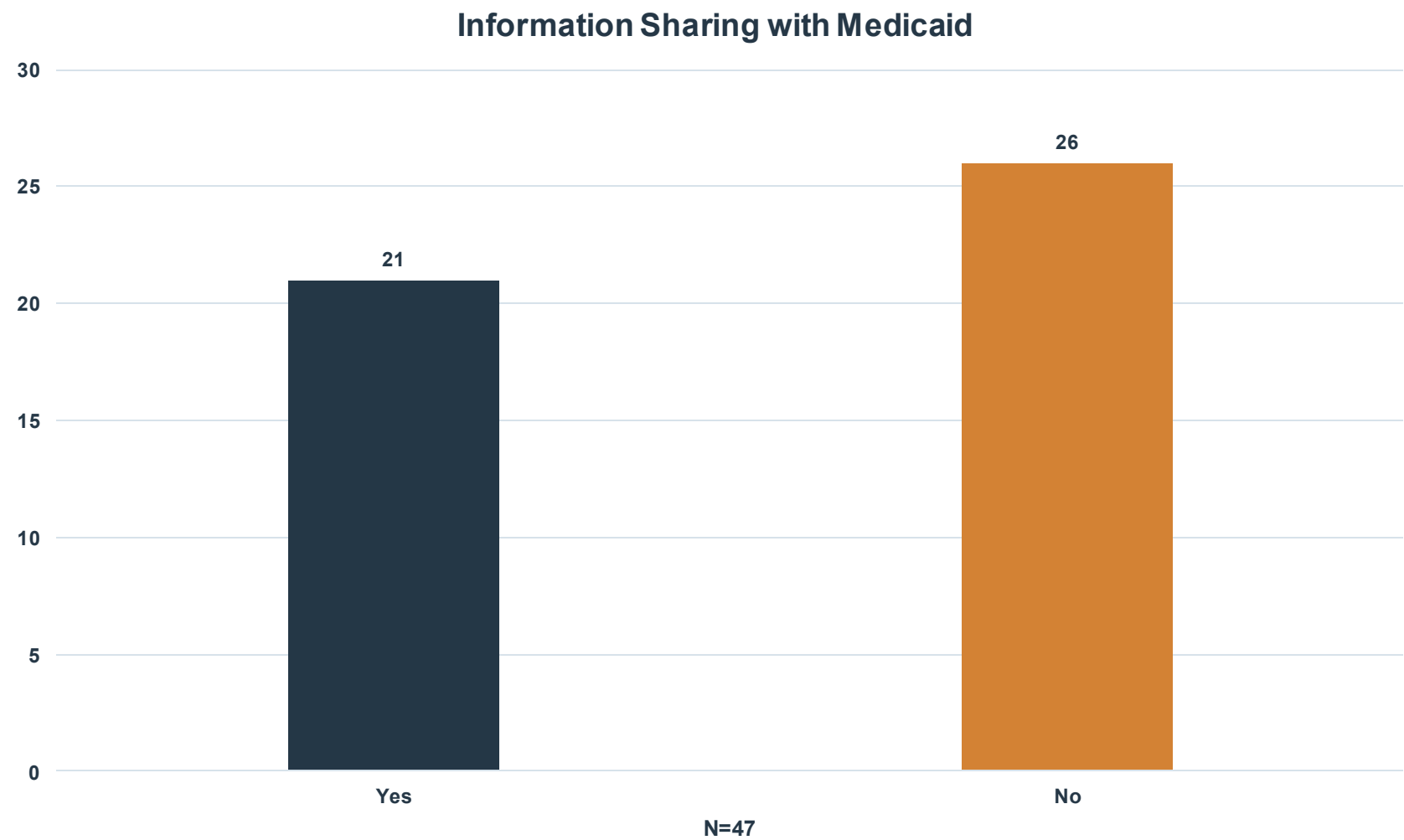
*\*\*Some cases have multiples types of abuse*



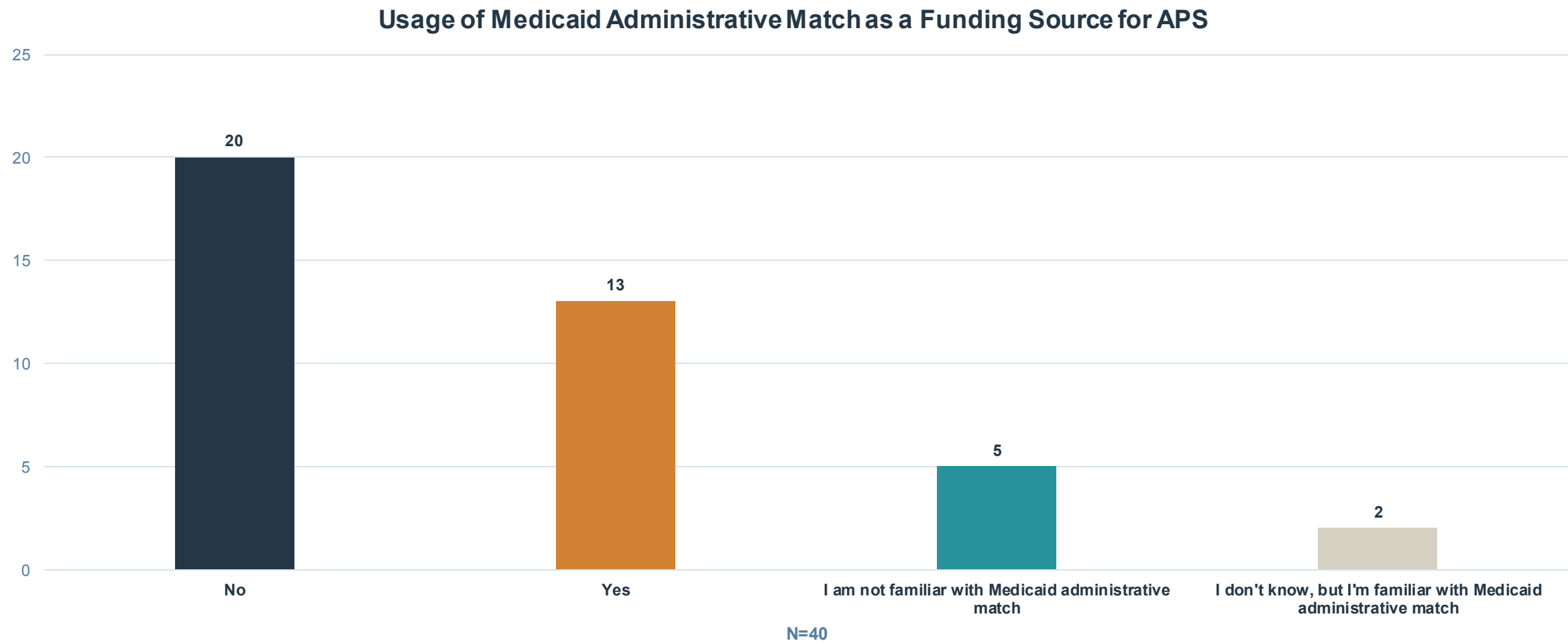
- Preliminary data, where available indicates approximately 50% of APS cases involved a victim that was Medicaid eligible\*
  - 44% of cases with victims did not have data regarding Medicaid eligibility
- Medicaid financing can be used to support APS for these individuals in several ways
  - Medicaid administrative claiming
  - Medicaid critical incident reporting
  - Medicaid services

\* Source: ACL and the Adult Protective Service Technical Assistance Resource: 2021 data from 19 reporting states

# Information Sharing with Medicaid



# Use of Medicaid Administrative Claiming



# Medicaid Administrative Claiming



# What is Administrative Claiming?

## Administrative Claiming:

- Funding for the “proper and efficient administration of the [Medicaid] state plan”
- Financed at 50% federal funding

Could apply to certain expenditures and activities<sup>9</sup> performed in support of state Medicaid long-term services

# Potentially Claimable APS Activities

## Intake and Screening

System and staffing for prompt receipt of reports of alleged adult maltreatment of beneficiaries receiving Medicaid services and the screening, prioritization and assignment of cases for follow up.

## Follow-up Investigation

Information gathering to determine if maltreatment has occurred in the provision of Medicaid services, assessment of client needs to determine required services or actions necessary for an individual to be safe and remain as independent as possible.

## Service Planning

Service planning with the client related to Medicaid-funded services to improve client safety, prevent maltreatment and improve quality of life and ongoing monitoring of service plan. Coordination with Medicaid case managers in making revisions or developing a service plan for Medicaid beneficiaries.

## Training

Training activities of APS workers on Medicaid LTSS, including eligibility rules related to Medicaid benefits and health and welfare requirements included in a state's Medicaid waivers.

# Overview of 6-Step Process



**Step One:**  
State  
Medicaid  
Agency  
Engagement

**Step Two:**  
Identify  
Permissible  
Non-Federal  
Matching  
Funds

**Step Three:**  
Identify  
Activities  
Potentially  
Eligible for  
Medicaid  
Admin Match

**Step Four:**  
Identify Costs  
of Allowable  
Activities

**Step Five:**  
Establish  
Contractual  
Agreements

**Step Six:**  
Secure CMS  
Review and  
Approval

# Questions for Adult Protective Services



Are benefits of match desirable enough to offset requirements & staff work?



Are there activities already occurring that would qualify?



Are existing systems & processes able to produce required documentation?



What relationships exist with Medicaid and/or need strengthening?

# Medicaid Health and Welfare

# Background: Health and Welfare

CMS/ACL/OIG released a report on HCBS health and welfare that found:

- Ensuring all critical incidents are reported
- Properly recording all reported incidents
- Ensuring incidents were reported at the correct severity level
- Collecting and reviewing all data on critical incidents
- Ensuring all reasonable suspicions of abuse or neglect were reported

The report listed four key components of health and safety in HCBS:

- Reliable incident management and investigation processes
- Audit protocols that ensure compliance with reporting, review, and response requirements
- Effective mortality reviews of unexpected deaths
- Quality assurance mechanisms that ensure the delivery and fiscal integrity of appropriate community-based services.

# Medicaid Critical Incident Investigations: How?

- In many cases, Medicaid quality assurance staff do not have background or training in investigation or substantiation
- States are seeking partnerships to better address critical incident response and remediation
- Ongoing CMS emphasis, including “Special Review Team” visits will drive further Medicaid action on this issue
- In states without a strong APS/Medicaid connection, this is an acute opportunity



# Potential Next Steps



## Identify Existing Critical Incident Management Procedures:

What currently exists in the state?

What are strengths and weaknesses of existing infrastructure?



## Establish Protocols:

Determine role for APS in Medicaid critical incident management

Develop MOU or other formal agreement on responsibilities and reasonable data sharing

Leverage Medicaid match to support the activities that address health and welfare



# Medicaid & APS Services

# Historic Investments

## CARES Act of 2021

- \$93.88M for Adult Protective Services
- \$4M for Long-Term Care Ombudsman Program

## American Rescue Plan Act of 2021

- \$86M awarded to APS in 2021
- \$85.4M awarded to APS in 2022
- \$4M for Long-Term Care Ombudsman Program

## APS Technical Assistance Resource Center

- Currently providing intensive TA to states

# 40 Plans: Common Priorities



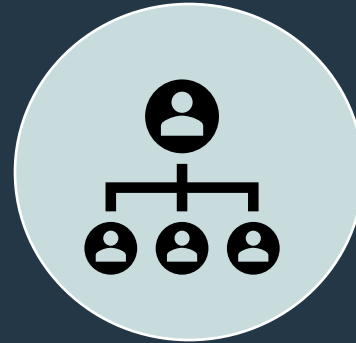
Services  
for clients



Technology  
investment  
s incl.  
equipment



Training



Staffing



Contract  
expertise



# Services Identified in ARPA APS Spend Plans

Emergency/Temporary  
**Housing**, Moving  
assistance

Utility, rent assistance,  
minor home repair

Deep cleaning, pest  
eradication

Domestic goods,  
clothing, and provisions

Food, medications,  
DME, transportation

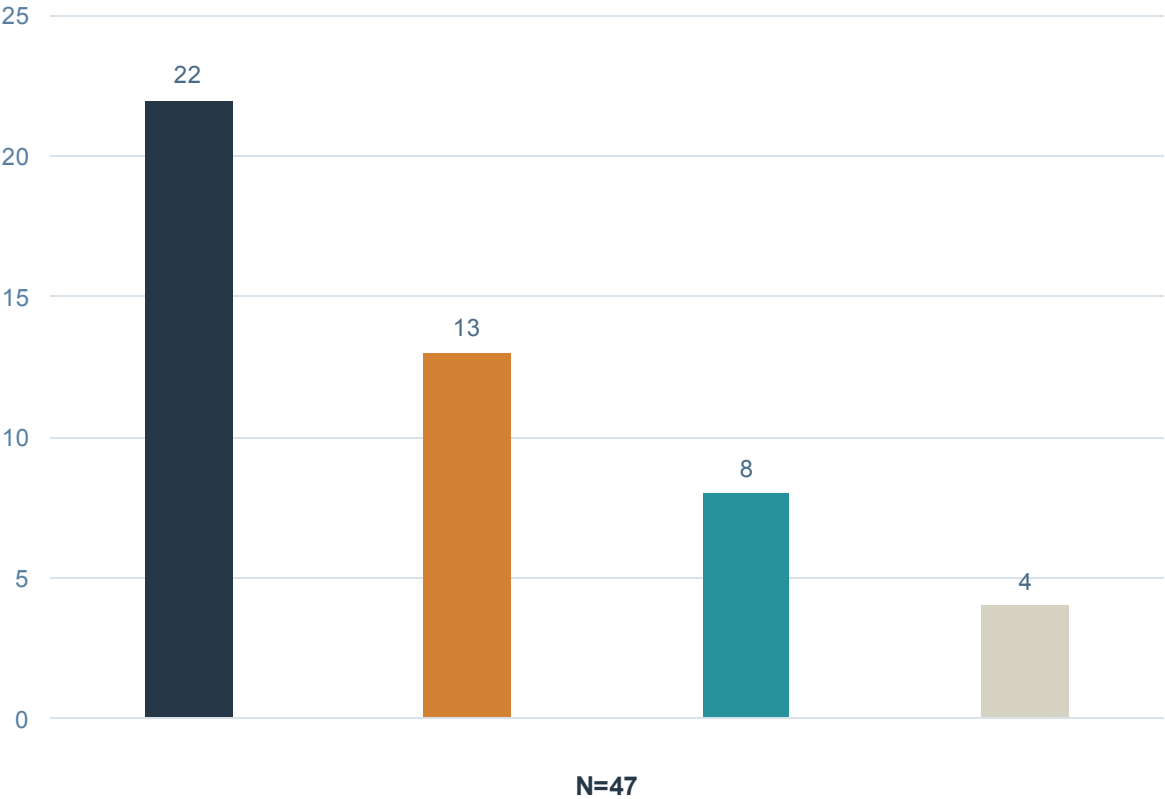
In-home care, respite,  
transition of care  
support

Case management,  
mental health services

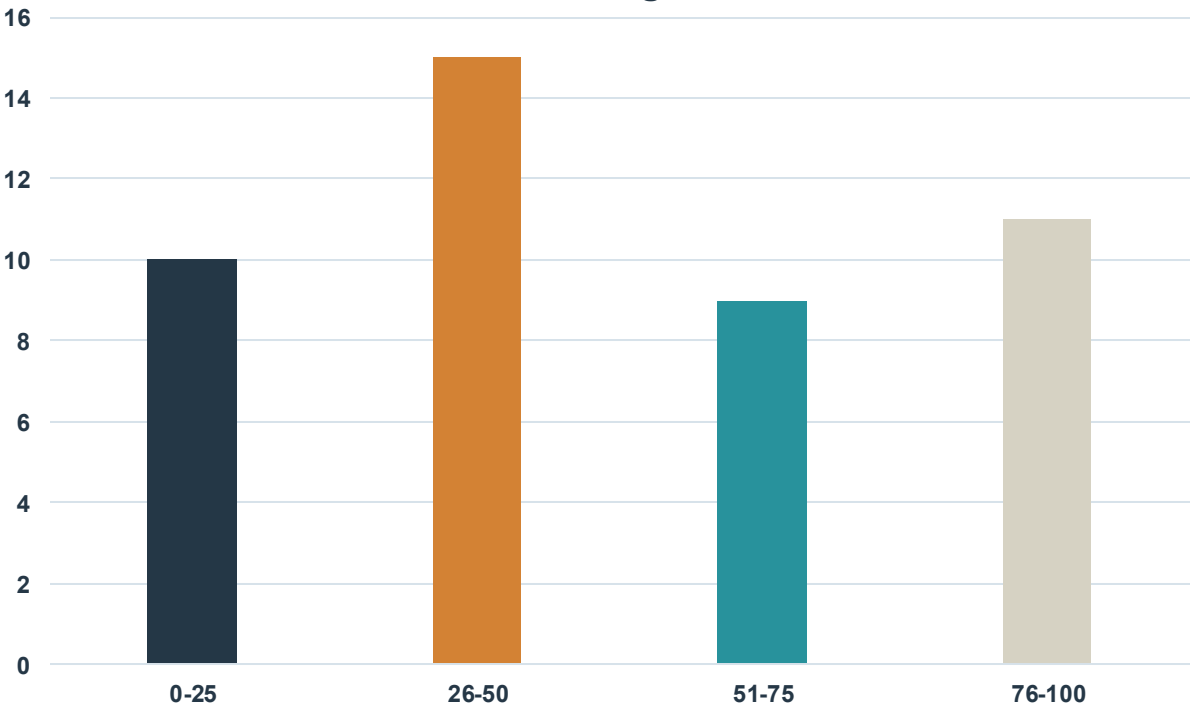
Legal services,  
guardianship

# Need for longer-term support

Case Management for All Clients



Case Management for Clients Experiencing Self Neglect



# APS and Medicaid Services

What should APS finance?

What can be provided via Medicaid?

# Opportunities & Barriers

# Top 5 Shared Categories of Information

Results of APS investigation (Client)



Critical Incident Management data



Health and safety assurances



List of shared clients



Results of the APS investigation (alleged perpetrator)



# Barriers

State  
Confidentiality  
Laws: APS  
Clients

State  
Confidentiality  
Laws: Alleged  
Perpetrator

State or County  
APS Structure

Technology:  
Stage of  
Development

Technology:  
Lack of  
Interoperability

# Questions?



Leadership, innovation, collaboration  
for state Aging and Disability agencies

**Kathy Greenlee, Senior Director**  
**[kgreenlee@advancingstates.org](mailto:kgreenlee@advancingstates.org)**

# WellSky Professional Services

Learn how WellSky can  
lighten your IT workload



Request a consultation today!



# WellSky Professional Services

Learn how WellSky can  
lighten your IT workload



Request a consultation today!

